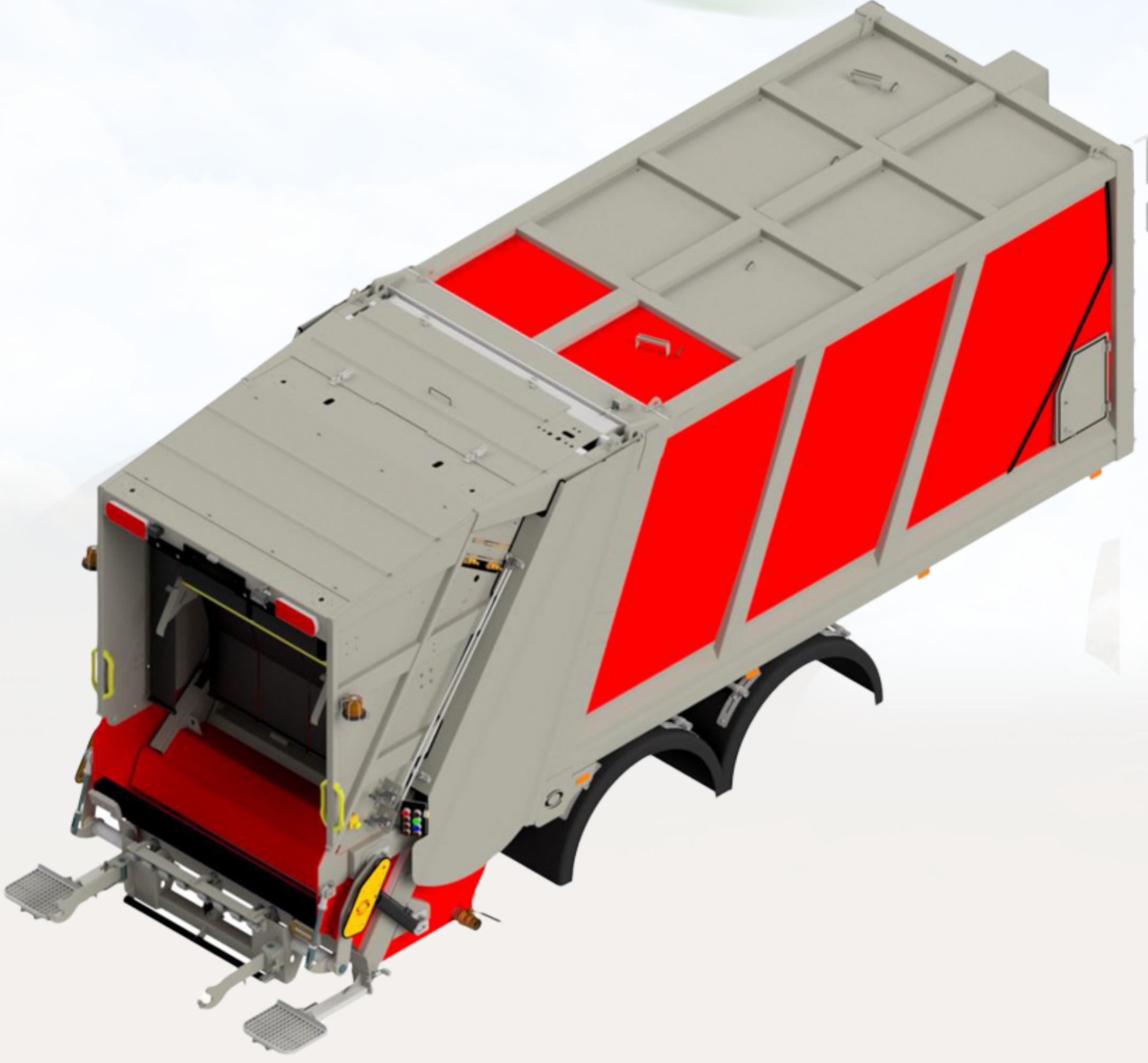


# ORV02

## series

Hydraulic Refuse  
Compactors



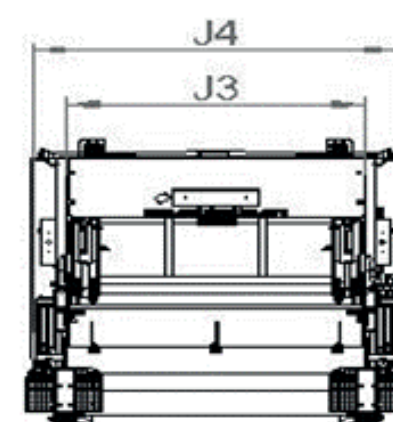
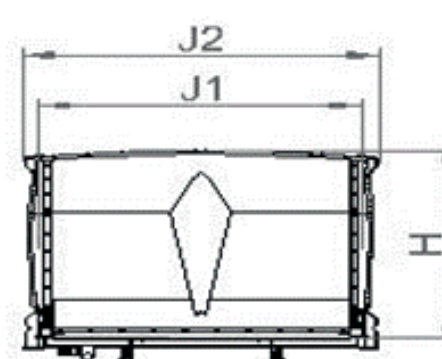
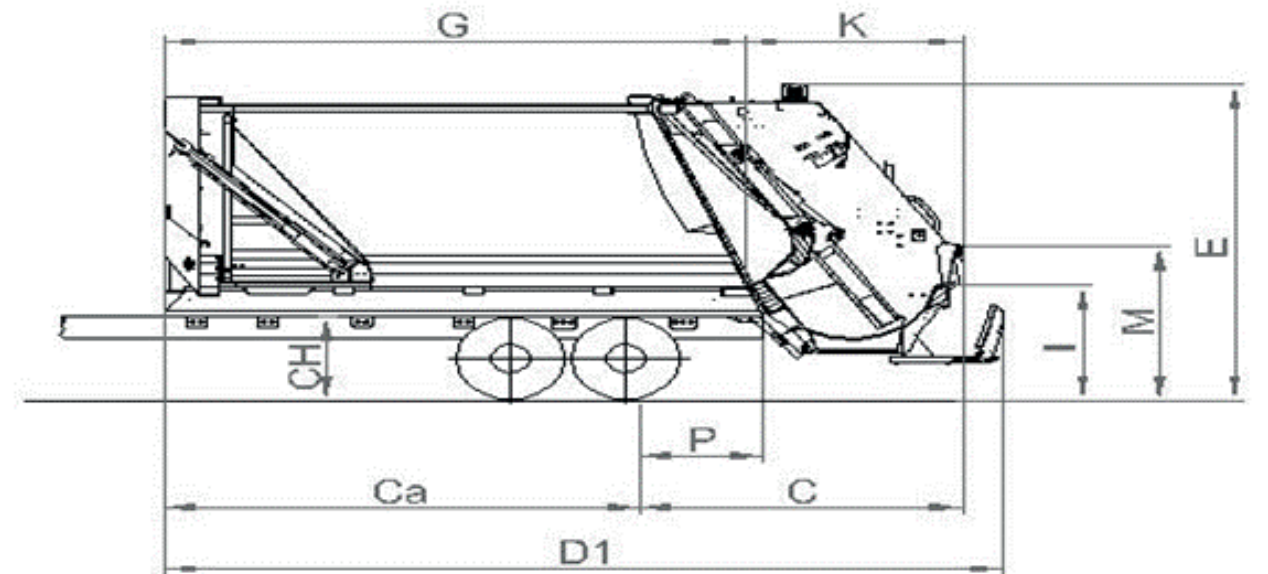
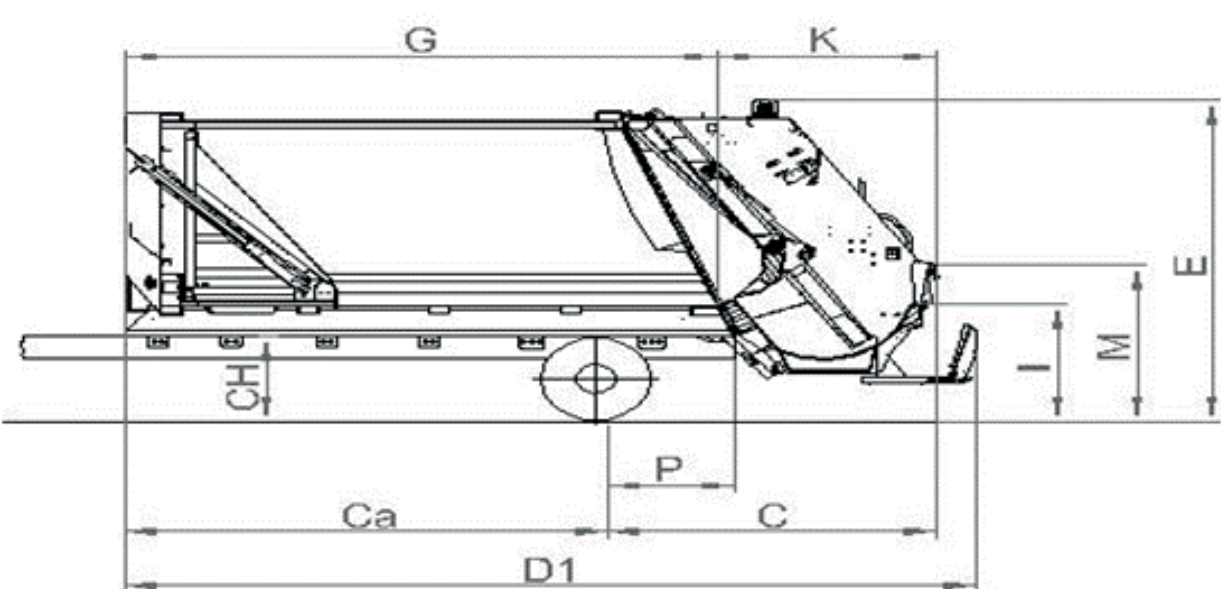
**ORAKCI**  
Makina İmalat İth. İhr. San. ve Tic. A.Ş.



# 1. Equipment Dimensions

TITAN 5 SERIES EQUIPMENT DIMENSIONS TABLE																						
	Letter Code	12 m³	13 m³	14 m³	15 m³	16 m³	17 m³	18 m³	19 m³	20 m³	21 m³	22 m³	23 m³	24 m³	25 m³	26 m³	27 m³	28 m³	29 m³	30 m³	31 m³	32 m³
Rear Overhang	*C	*May differ by truck.																				
Truck Ground Clearance	*CH	1000 mm																				
Total Length	D1	5545	5745	5945	6145	6345	6545	6745	6945	7145	7345	7545	7745	7945	8145	8345	8545	8745	8945	9145	9345	9545
Body Height	*E	3590 mm																				
Body Internal Height	H	2154 mm																				
Useful Chassis Length	*Ca	2619	2819	3019	3219	3419	3619	3819	4019	4219	4419	4619	4819	5019	5219	5419	5619	5819	6019	6219	6419	6619
Truck Chassis Width	CW	*May differ by truck.																				
Body Length	G	3413	3613	3813	4013	4213	4413	4613	4813	5013	5213	5413	5613	5813	6013	6213	6413	6613	6813	7013	7213	7413
Hopper Length	K	2000 mm																				
Loading Height	*I	1000 mm																				
Hopper Height	*M	1410 mm																				
Body Internal Width	J1	2264 mm																				
Body External Width	J2	2450 mm																				
Tailgate Hopper Internal Width	J3	2084 mm																				
Tailgate External Width	J4	2458 mm																				
Chassis Back Length	P	900 mm																				
Equipment Weight (kg) (±3%)	*	***Please contact ORAKÇI MAKİNA for equipment weight.																				

- For equipment over 28 m³, you can contact your sales representative.
- Parts marked with (\*) may differ by truck. The final dimensions become clear after the draft work. The table is for information purposes.
- (\*) These are the base equipment data, they do not include optional equipment or accessories.
- The equipment dimensions may vary by ±3% depending on the general tolerances.

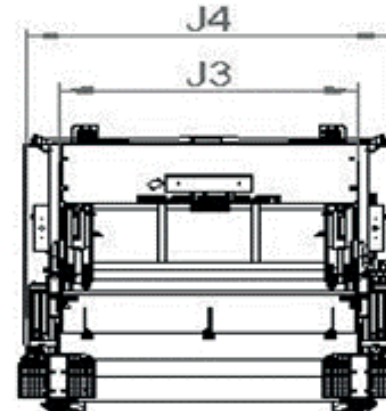
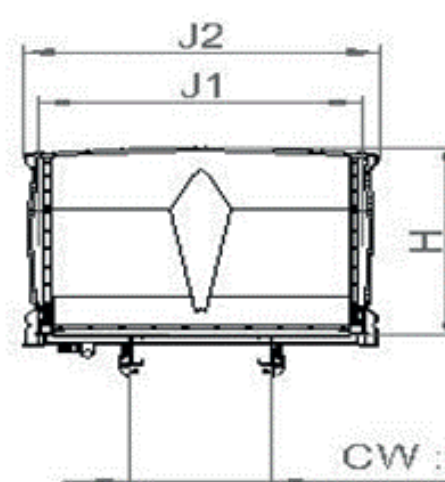
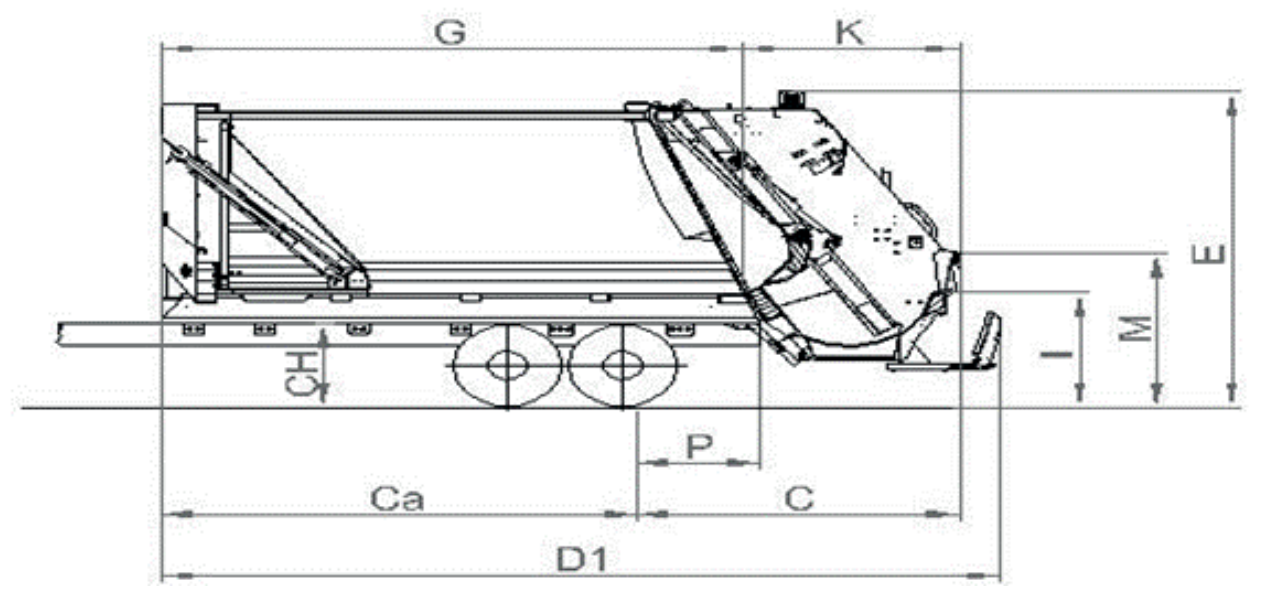
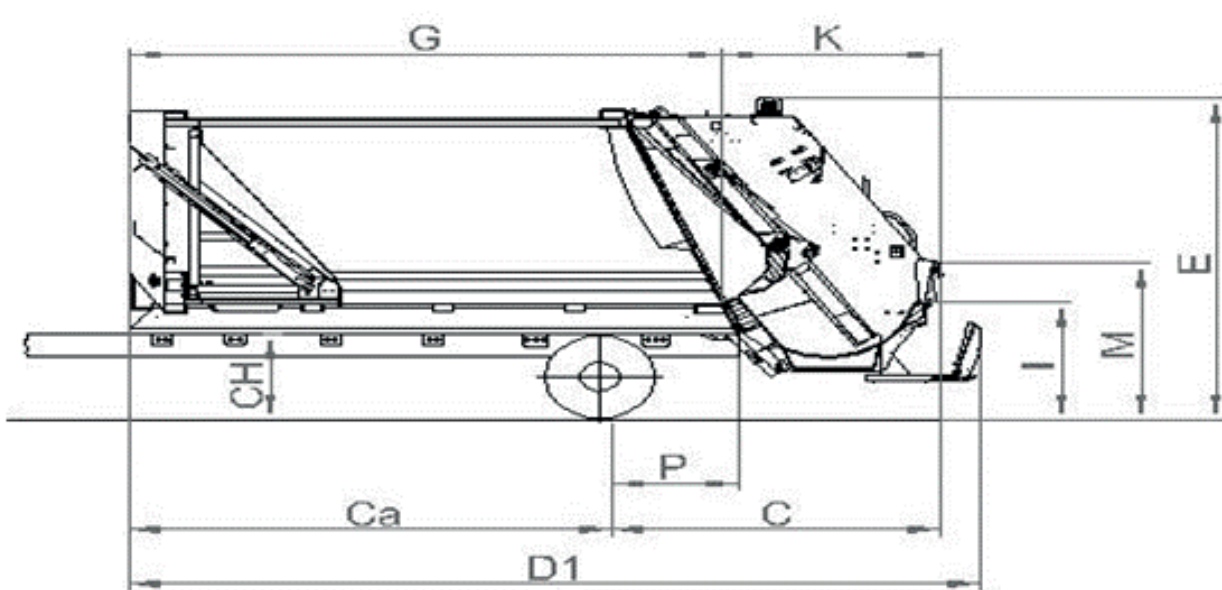


CW : Changeable for truck

**TITAN 4 SERIES EQUIPMENT DIMENSIONS TABLE**

	Letter Code	12 m³	13 m³	14 m³	15 m³	16 m³	17 m³	18 m³	19 m³	20 m³	21 m³	22 m³	23 m³	24 m³	25 m³	26 m³	27 m³	28 m³
Rear Overhang	*C	2867 mm																
Truck Ground Clearance	*CH	1000 mm																
Total Length	D1	5612	5837	6062	6287	6512	6737	6962	7187	7412	7637	7862	8087	8312	8537	8762	8987	9212
Body Height	*E	3590 mm																
Body Internal Height	H	2120 mm																
Useful Chassis Length	*Ca	2774	2999	3224	3449	3674	3899	4124	4349	4574	4799	5024	5249	5474	5699	5924	6149	6374
Truck Chassis Width	CW	*May differ by truck.																
Body Length	G	3583	3808	4033	4258	4483	4708	4933	5158	5383	5608	5833	6058	6283	6508	6733	6958	7183
Hopper Length	K	1936 mm																
Loading Height	*I	1000 mm																
Hopper Height	*M	1430 mm																
Body Internal Width	J1	2130 mm																
Body External Width	J2	2316 mm																
Tailgate Hopper Internal Width	J3	1950 mm																
Tailgate External Width	J4	2378 mm																
Chassis Back Length	P	900 mm																
Equipment Weight (kg) (±3%)	*	***Please contact ORAKÇI MAKİNA for equipment weight.																

- For equipment over 28 m³, you can contact your sales representative.
- Parts marked with (\*) may differ by truck. The final dimensions become clear after the draft work. The table is for information purposes.
- (\*) These are the base equipment data, they do not include optional equipment or accessories.
- The equipment dimensions may vary by ±3% depending on the general tolerances.



CW : Changeable for truck

## 2. Body Capacity

Capacity	ORV 500 Series
	12 m <sup>3</sup> - 32 m <sup>3</sup>



## 3. Tailgate Capacity

Capacity	TITAN SERIES TAILGATE FEATURES		
		5 Series	4 Series
Without Hopper Extension		1.75 m <sup>3</sup>	1.5 m <sup>3</sup>
	With Hopper Extension (Optional)	2.25 m <sup>3</sup>	2 m <sup>3</sup>
Loading Height	Without Hopper Extension	1000 mm	1020 mm
	With Hopper Extension (Optional)	1410 mm	1440 mm



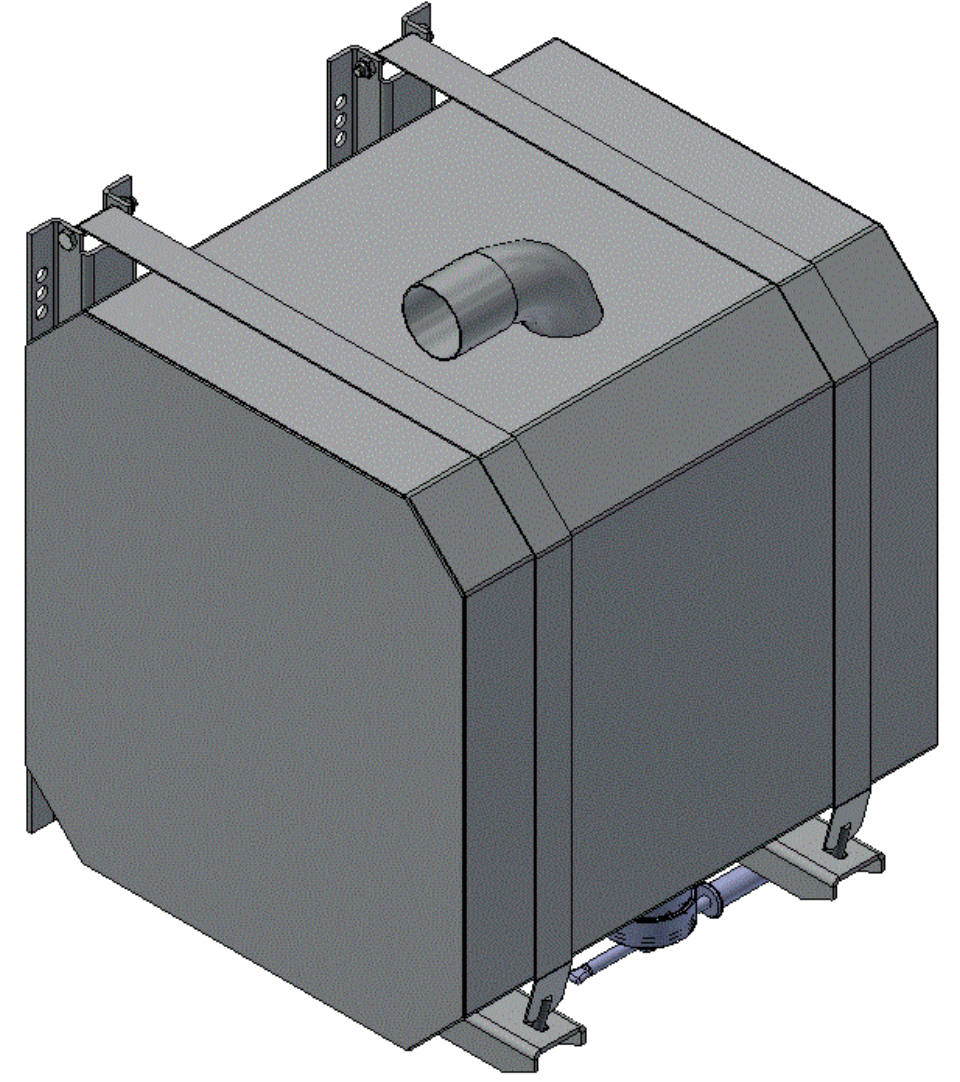
## 4. Hydraulic Features

TITAN Series Hydraulic Features		
Pump	Pump Types	Gear Pump
		Vane Pump (Optional)
		Piston Pump (Optional)
		Tandem Pump (Optional)
Operating Pressure		180 bar
	Pump Flow Rate	<b>TITAN SERIES</b> 82 lt/min.
		* Pump values may differ depending on motor output speed. Motor output speed Max. 1000rpm
Oil Tank	Capacity	<b>TITAN SERIES</b> 160 - 200 lt
	Suction Filter	125 µc
	Return Filter	25 µc



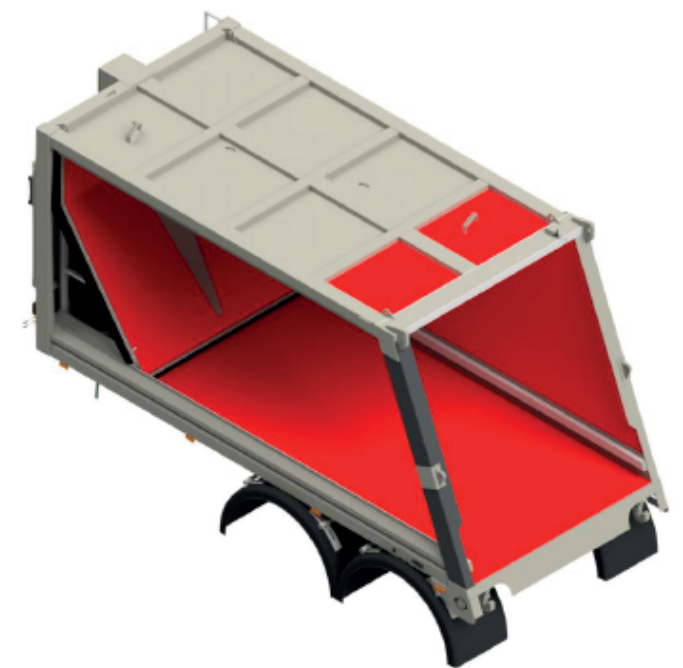
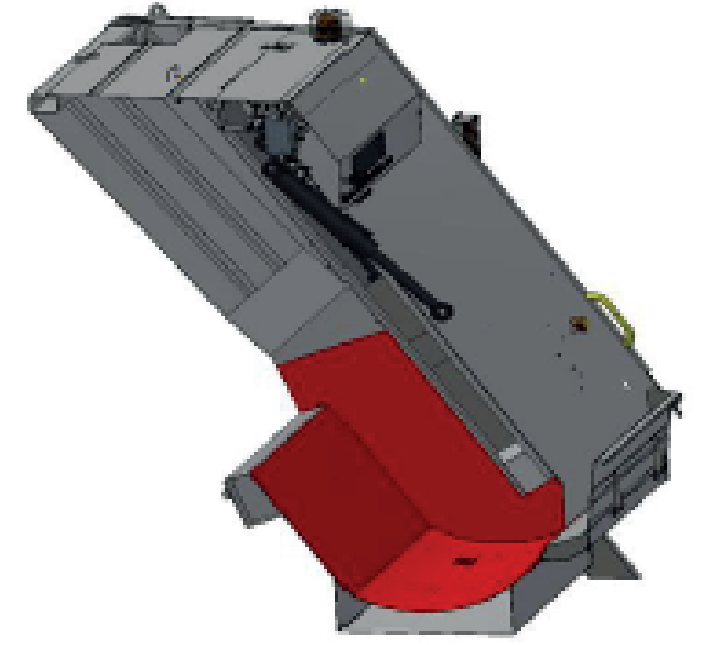
## 5. Waste Water Tank Features

Waste Water Tank Capacity	Body Bottom		
	Tank Additional Tank (Optional)	TITAN Series	
		50 lt	
		180 lt	
	Tailgate		
	Tank (Optional)	TITAN 5 Series	TITAN 4 Series
130 lt		190 lt	



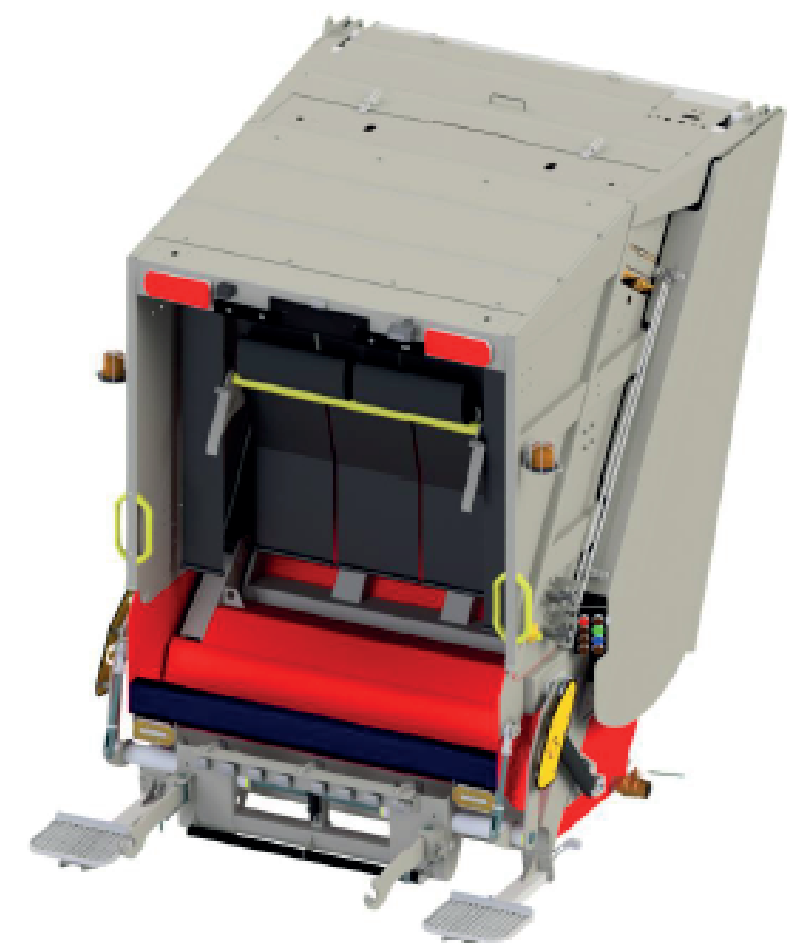
## 6. General Features

TITAN SERIES GENERAL FEATURES	
COMPACTION RATIO	1 : 6
PAINTING PROCESS	Paint - Primer
CONTAINER'S COMPLIANCE WITH STANDARDS	EN 840
OPERATING VOLTAGE	12V – 24V
SHIPPING	Disassembled
	Disassembled without Truck
	Disassembled with Truck



## 7. Materials Used

Material Features			
Material	Bottom	Side Wall	Top
	▪ Hardox 450	▪ Hardox 450	▪ Hardox 450 (Partial)
	Blade Bottom Sheet	Tailgate Tank	Blade
	▪ Hardox 450	▪ Hardox 450	▪ Hardox 450
	Skid	Tailgate Side Wall Packing Area	Ejection Plate
	▪ Hardox 450	▪ Hardox 450	▪ Hardox 450



We offer Hardox 450 as an option for extending the useful life of the equipment located in the parts exposed to corrosion.

## 8. Bin Lifter Systems

Body Bottom	
<b>Bin Lifter (Optional)</b>	<ul style="list-style-type: none"> <li>▪ 120 lt - 1100 lt (EN 840)</li> <li>▪ 120 lt - 1700 lt (EN 840)</li> <li>▪ 400lt - 800lt (TR)</li> </ul>
<b>Skiploder System Bin Lifter (Optional)</b>	▪ 3m <sup>3</sup> - 6m <sup>3</sup>
<b>Hydromotor Pulling Drum (Optional)</b>	▪ 3m <sup>3</sup> - 6m <sup>3</sup>



We produce systems whose EN 840 standard-compliant bin lifter is suitable for lifting plastic and metal containers.

## 9. Optional Features

Hydraulic Control System	<ul style="list-style-type: none"> <li>▪ Manual</li> <li>▪ Semi-automatic</li> <li>▪ Automatic</li> </ul>	Hardox	<b>HARDOX®</b> WEAR PLATE	Tailgate Hopper		Electrical Control System	<ul style="list-style-type: none"> <li>• PLC</li> <li>• ECU</li> <li>• ECU-CANBUS</li> </ul>
Bin Lid Opener		Bin Stopper		Equipment Control Directions	Right / Left	Step Sensor	
EN 1501 : Refuse collection vehicles -General requirements and safety requirements		Steps ( EN 1501 )		Vertical Cover		Inner Cabin Control	
Wastewater Tank		Ladder		• Skiploder System Bin Lifter		Side Marker Lights	
Worker Safety Barriers EN 1501		Fire Extinguisher Box		Hydromotor Pulling Drum		Camera	
Mud Guards		Bicycle Stand EN 1501				Container Body Lighting	
Bin Lifter		Manual Bin Washing System				Button Type	



## 10. Truck Warning Alarm System

Truck Warning Alarm System		
Manual	Semi automatic	Automatic
Beacon Light	Beacon Light	Beacon Light
Hopper Lighting Lamps	Hopper Lighting Lamps	Hopper Lighting Lamps
Stop Lamps	Stop Lamps	Stop Lamps
Driver Warning	Driver Warning	Driver Warning
Side Marker Light (Optional)	Side Marker Light (Optional)	Side Marker Light (Optional)
Safety Sensor Between Tailgate Ejection Plate	Safety Sensor Between Tailgate Ejection Plate	Reversing Buzzer
		Step Sensor (Optional)
		30 km/h Speed Limiter Signal
		Camera System (Optional)
		Inner Tank Recovery Buttons
		Outer Tank Stop Buttons
		Safety Sensor Between Tailgate Ejection Plate
		Two Hand Control Button
		Full Body Sensor (Optional)
		Tailgate Hopper Sensor

11. Compaction ratio 1:6.

12. Tailgate can open up to 89°.

13. 1-year product warranty and 10-year spare parts supply warranty is provided.

14. Following the analysis of each designed equipment via the programs, mass production of them is carried out after testing for at least 6 months in the field test.

15. The special design of the tailgate allowed it to be positioned very close to the truck cabin. In this way, high volume and carry capacity are also provided in short chassis.

16. Through the installation of a closed-circuit camera system in the driver's cabin, the communication of the driver with the operators is increased and work safety is ensured. Ease of use is offered via an optional touch screen.

17. Equipment designs are made suitable for transportation in containers. In this way, our equipment is delivered to our customers all over the world. Tax exemption is provided to our customers through disassembled equipment.

18. CKD-SKD and Disassembled production can be performed. Production can be made in line with business models depending on customer and market needs.

19. Two-hand buttons are embedded in the body to provide a flat appearance. In this way, external deformations are prevented and convenience is ensured for the worker.

