

# OHL

## series

H O O K L I F T

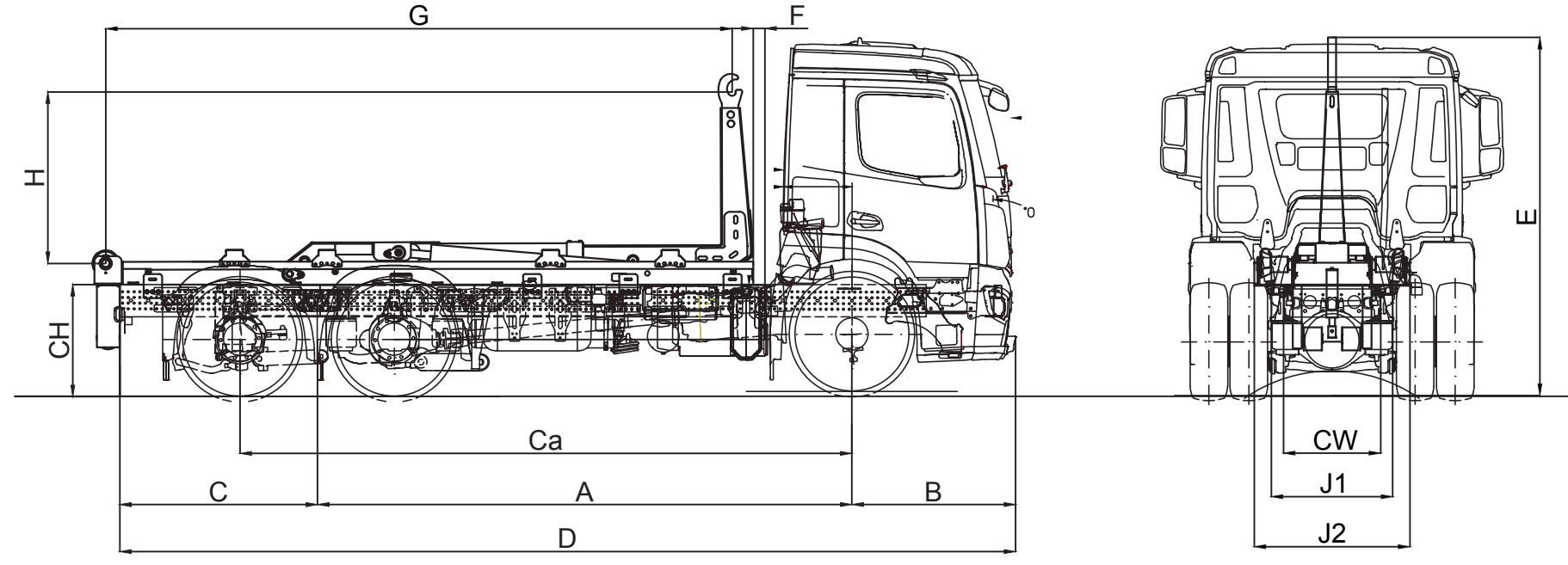


**ORAKCI**  
Makina İmalat İth. İhr. San. ve Tic. A.Ş.





## 1. Equipment Dimensions



Equipment Dimensions List

	Letter Code	6 T	10 T	14 T	18 T	22 T	26 T
Rear Overhang	*C	1000	1000	1000	1000	1000	1000
Truck Ground Clearance	*CH	1135	1135	1135	1135	1135	1135
Total Length	D	6.185	6.791	7.397	8.003	8.610	9.216
Body Height	*E	2.729	2.802	2.875	2.948	3.020	3.092
Body Internal Height	H	1.446	1.464	1.484	1.504	1.528	1.552
Useful Chassis Length	*Ca	2989	3224	3449	3674	3899	4124
Truck Chassis Width	CW	May Differ by Truck					
Body Length	G	4.042	4536	5031	5525	6.020	6.515
Equipment Chassis Width	J	1.297	1.297	1.297	1.297	1.297	1.297
Equipment Weight (kg) (±3%)	*	1800	2050	2300	2550	2800	3050

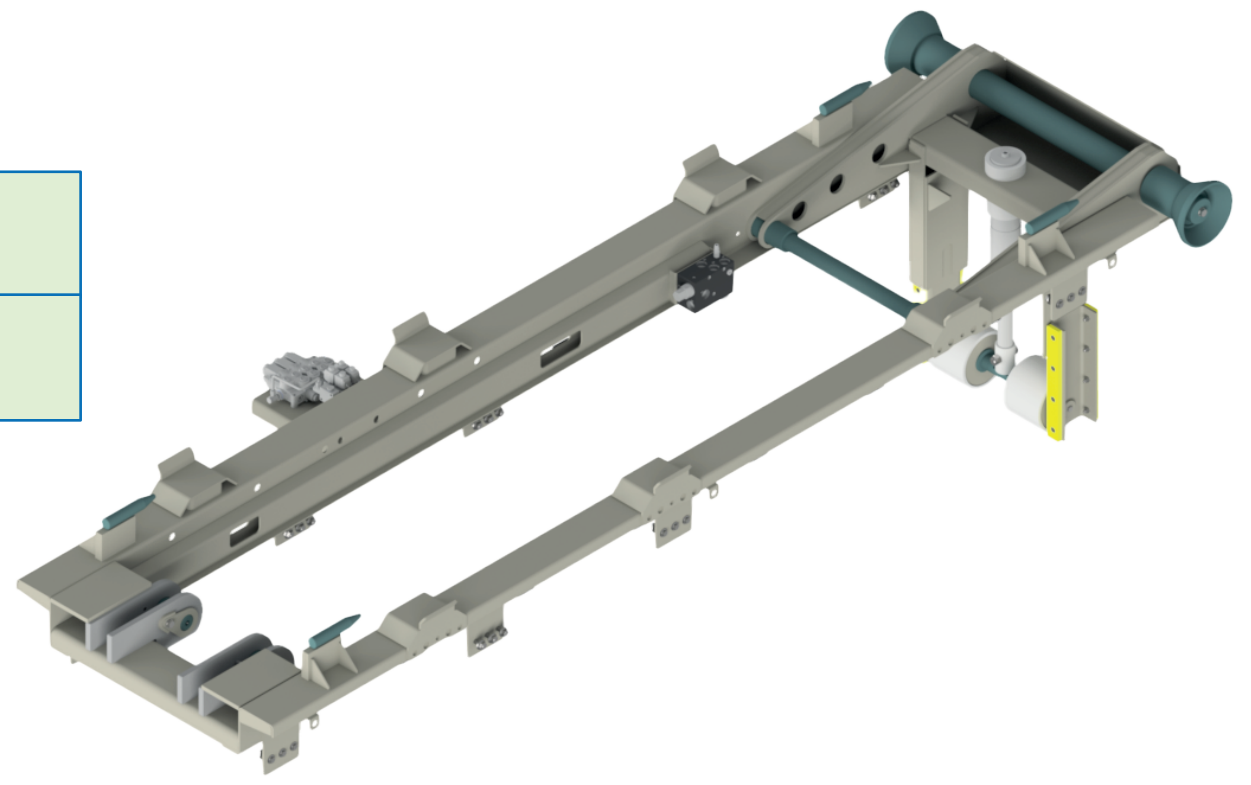
Parts marked with (\*) may differ by truck. The final dimensions become clear after the draft work. The table is for information purposes.

(\*) These are the base equipment data, they do not include optional equipment or accessories.

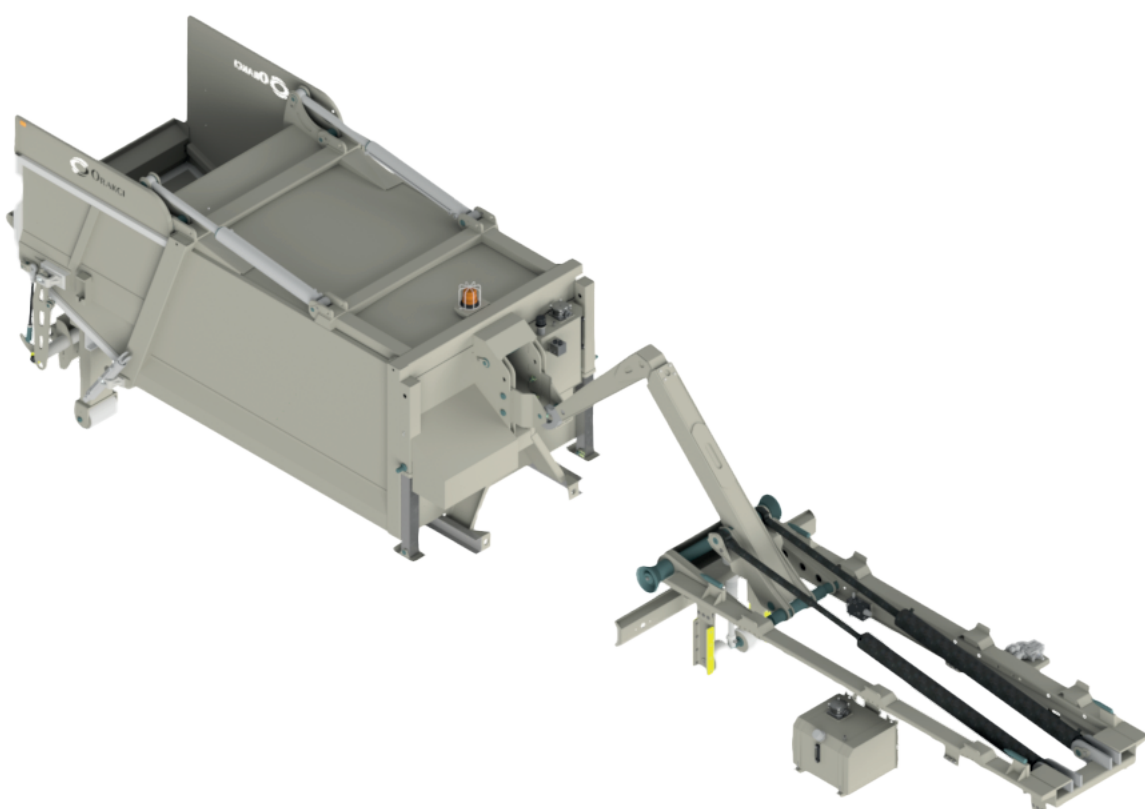
The equipment dimensions may vary by ±3% depending on the general tolerances.

## 2. Body Capacity

Capacity	OHL
	6 Tons - 26 Tons



## 3. Hydraulic Features



Hydraulic Features

Pump	Pump Types	Gear Pump Piston Pump (Optional)
	Operating Pressure	180-240 bar
	Pump Flow Rate	50 - 90 lt/min. <small>* Pump values may differ depending on motor output speed. Motor output speed Max. 1000rpm</small>
Oil Tank	Capacity	80 - 120 lt
	Suction Filter	125 µc
	Return Filter	25 µc

## 4. Optional Features

Hydraulic Control System	Manual Automatic	Modifiable Hook System	
Inner Cabin Control	 Touch-screen Control  Button Control	Mud Guards	
Beacon Light		Warning System	
Fire Extinguisher Box		Bicycle Stand	
Camera		Combined Operation System	
CANBUS - ECU			
Recorder			

\*\* Please contact ORAKCI MAKİNA for optional requests

6. Following the analysis of each designed equipment via the programs, mass production of them is carried out after testing for at least 6 months in the field test. In this way, we offer a long operational life that will ensure customer satisfaction.

7. Through the installation of a closed-circuit camera system in the driver's cabin, the communication of the driver with the operators is increased and work safety is ensured. Ease of use is provided via an optional touch screen.

8. CKD-SKD and Disassembled production can be performed. Production can be made in line with business models depending on customer and market needs.

9. 1-year product warranty and 10-year spare parts supply warranty are provided

